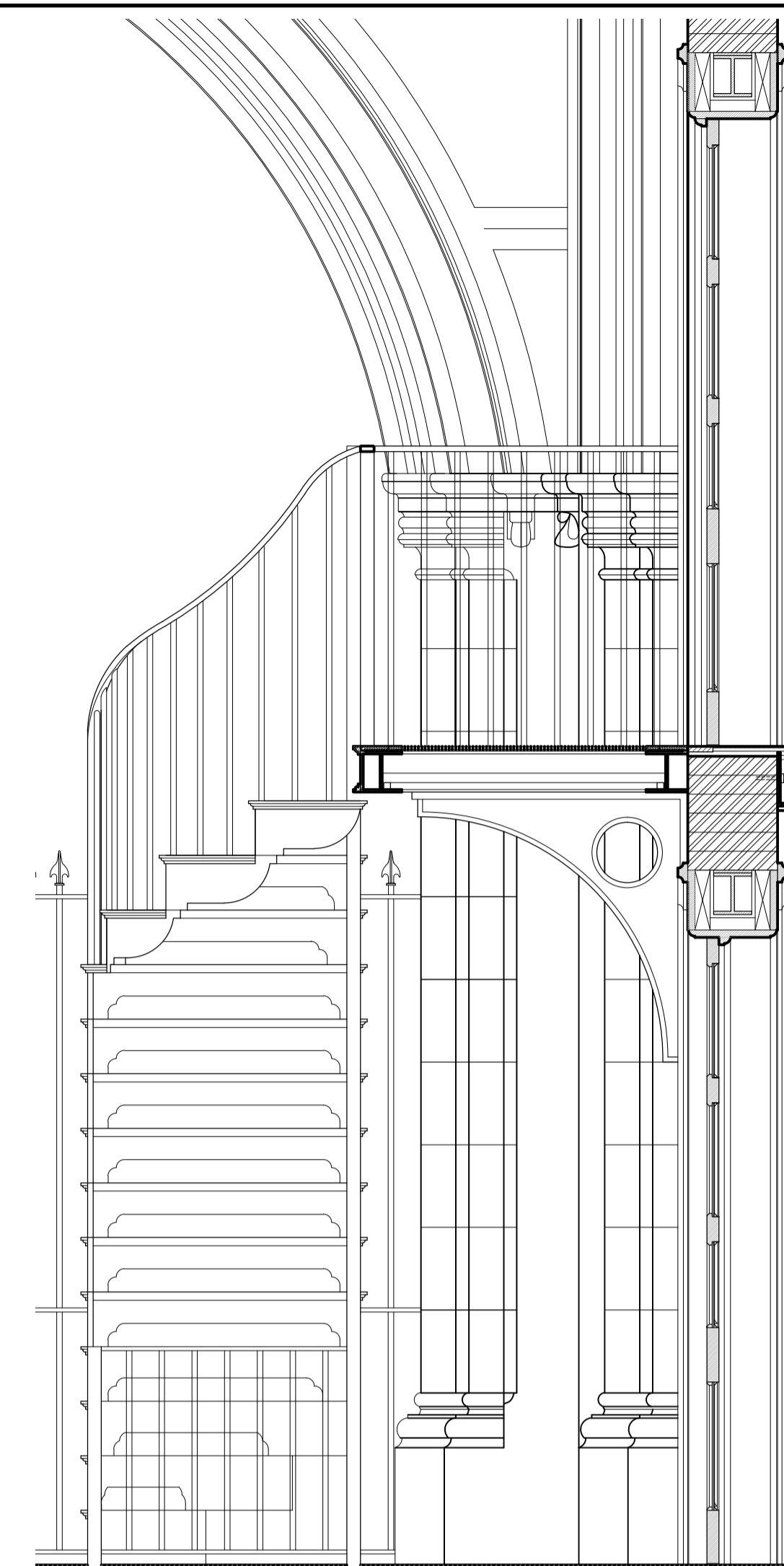


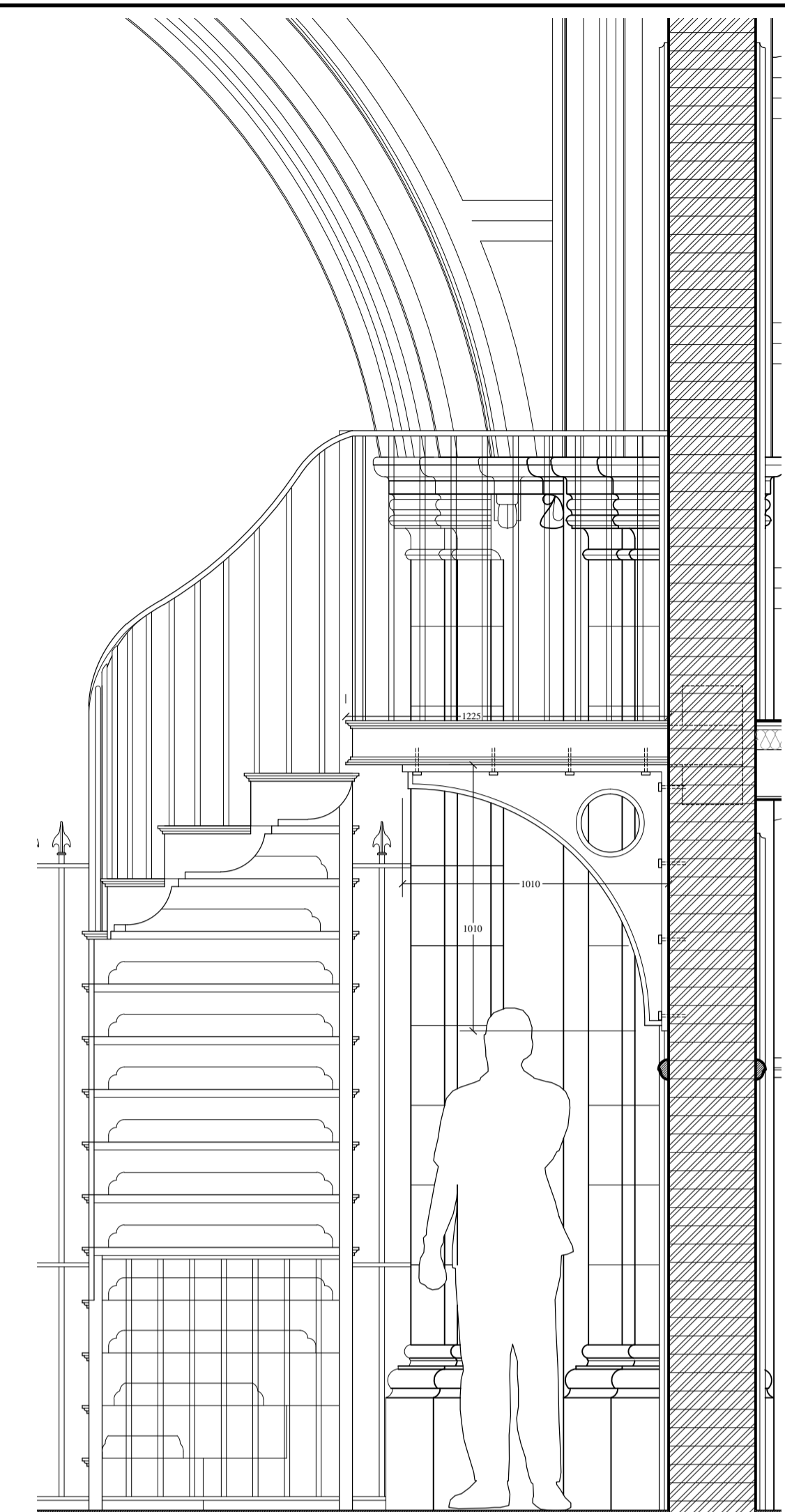
01 Proposed Steps Elevation A  
1:20@A1



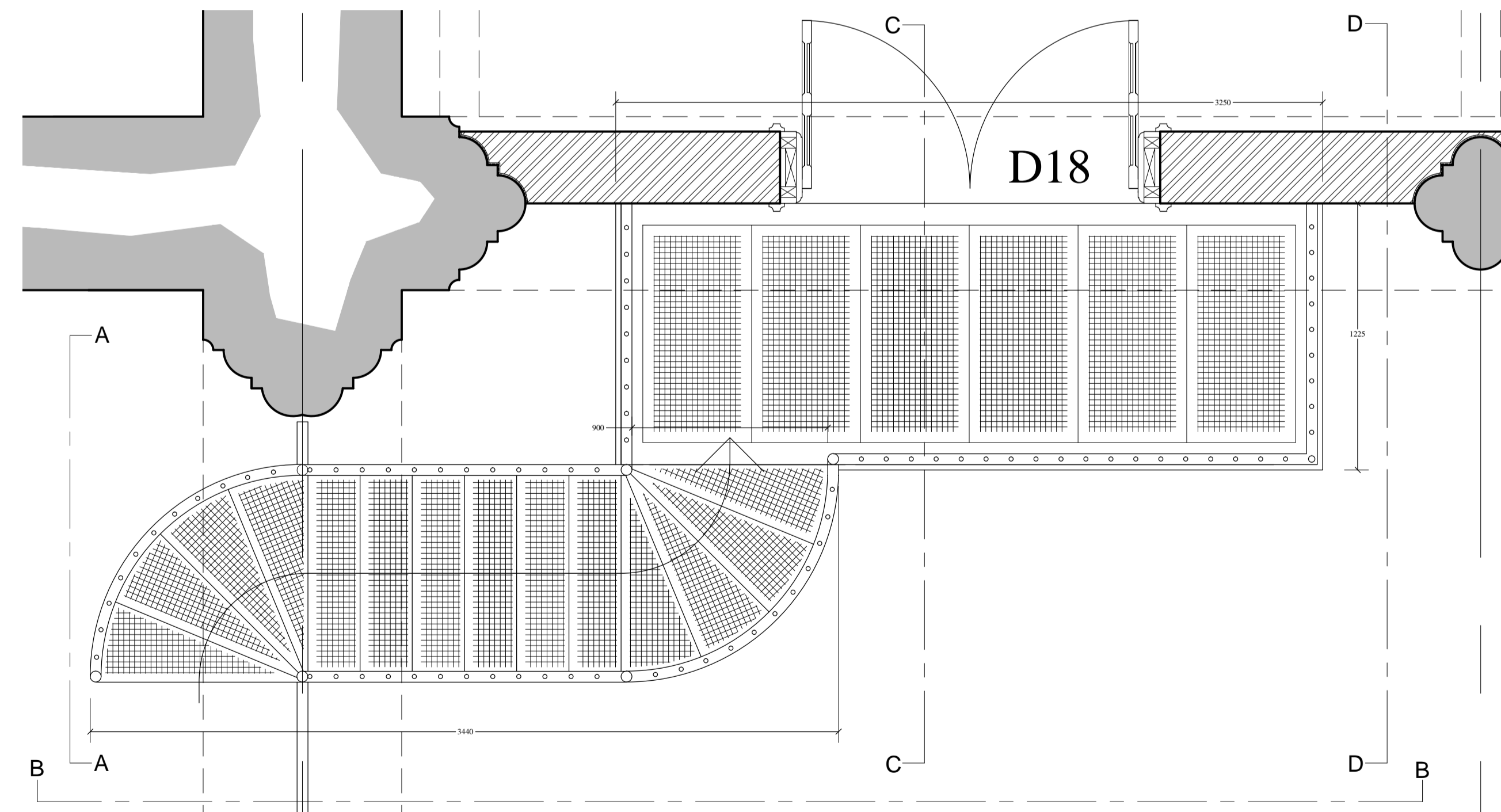
02 Proposed Steps Elevation B  
1:20@A1



03 Proposed Steps Elevation C  
1:20@A1



04 Proposed Steps Elevation D  
1:20@A1



05 Proposed Steps and Landing Plan  
1:20@A1

Note: Drawing to be read with DIA Drawings 3703-3710

ISSUED FOR TENDER

No. NOTES (STATUS: F. FEASIBILITY S. SKETCH DESIGN P. PLANNING B. BUILDING CONTROL D. DESIGN DEV / PRELIM M. MEASUREMENT T. TENDER C. CONTRACT R. RECORD W. WORKING DRAWING)

- 1 For construction use only if status 'C' and checked against current revision
- 2 All dimensions to be checked on site by contractor
- 3 Do not scale from this drawing
- 4 Unless otherwise indicated all dimensions are in millimetres

Rev	Date	Des	Auth	REVISIONS
A	15/01/16	RNB	NML	ISSUED FOR CONSTRUCTION
-	20/02/15	NML	FM	Initial Issue

**DONALD INSALL ASSOCIATES LIMITED**

19 West Eaton Place Eaton Square London SW1X 8LT Tel: 020 7245 9888 Fax: 020 7235 4370 Email: london@insall-architects.co.uk

CHARTERED ARCHITECTS  
PLANNING CONSULTANTS

Job Emmanuel Church, West Hampstead  
Title Proposed Metal Stair and Landing

Job No	ECWH	Status	T
3702	Rev	A	
Scale (A1) 1:		2	0